

## InTouch Portal Installation



The inTouch Portal connects your Vi Chlorinator and/or your Insnrg Expansion Relay System to your WiFi system and allows you to control your pool automation system after downloading the inTouch Automation App from the Google Play Store or iOS App Store.

## Planning your WiFi Connection

Before locating the inTouch Portal, check that you have stable 2.4G WiFi with at least 2 bars where the Portal is being installed.

If building a new pool and the equipment is located more than 20 metres from your home WiFi source or in a plantroom or other enclosure that is surrounded by thick walls, metal or steel reinforcement the best result will be achieved if a Cat 5 or Cat 6 cable is installed and terminated at the equipment and near your home WiFi source.

Generally, the portal will connect wirelessly to the home WiFi system when installed up to 30 or 40 metres from the WiFi device however, there are many factors affecting WiFi strength including but not limited to:

- Age and quality of the WiFi device
- Type of construction of the home and walls in which the WiFi signal has to pass through
- The location of the Portal eg: if surrounded by a metal or steel frame a WiFi signal may not pass through or reach the portal

The WiFi signal can be improved or extended in the following ways:

1. Move the Portal location closer to the WiFi system. The Portal comms cable connecting to the Insnrg equipment system can be up to 50 metres. A 10m, 20m or 50m Cat 6 Cable can be purchased from Insnrg.
2. A WiFi range extender, booster or repeater that places the extender between the WiFi source and the inTouch Portal
3. A Cat 5 or Cat 6 cable run from near the WiFi source to the equipment pad and plugged into the Insnrg equipment. In this case the portal can be located inside the home close to the WiFi source.
4. WiFi over power line.

In general, if you can achieve 2 bar WiFi signal on your smart phone at the location of the InTouch Portal the signal will be sufficient.

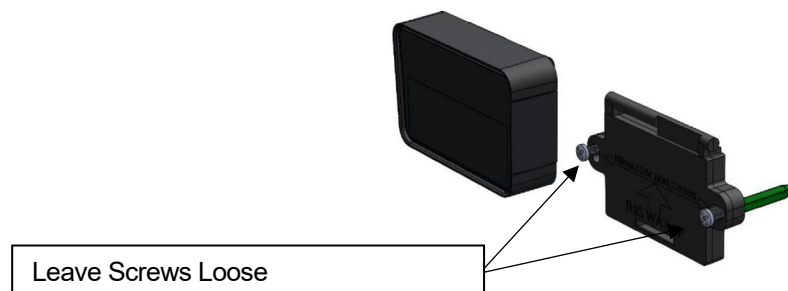
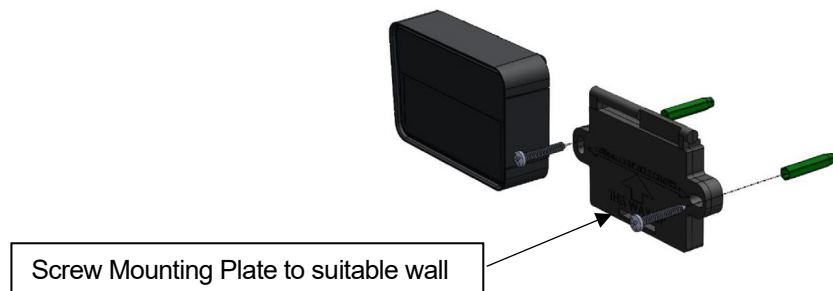
## Installation

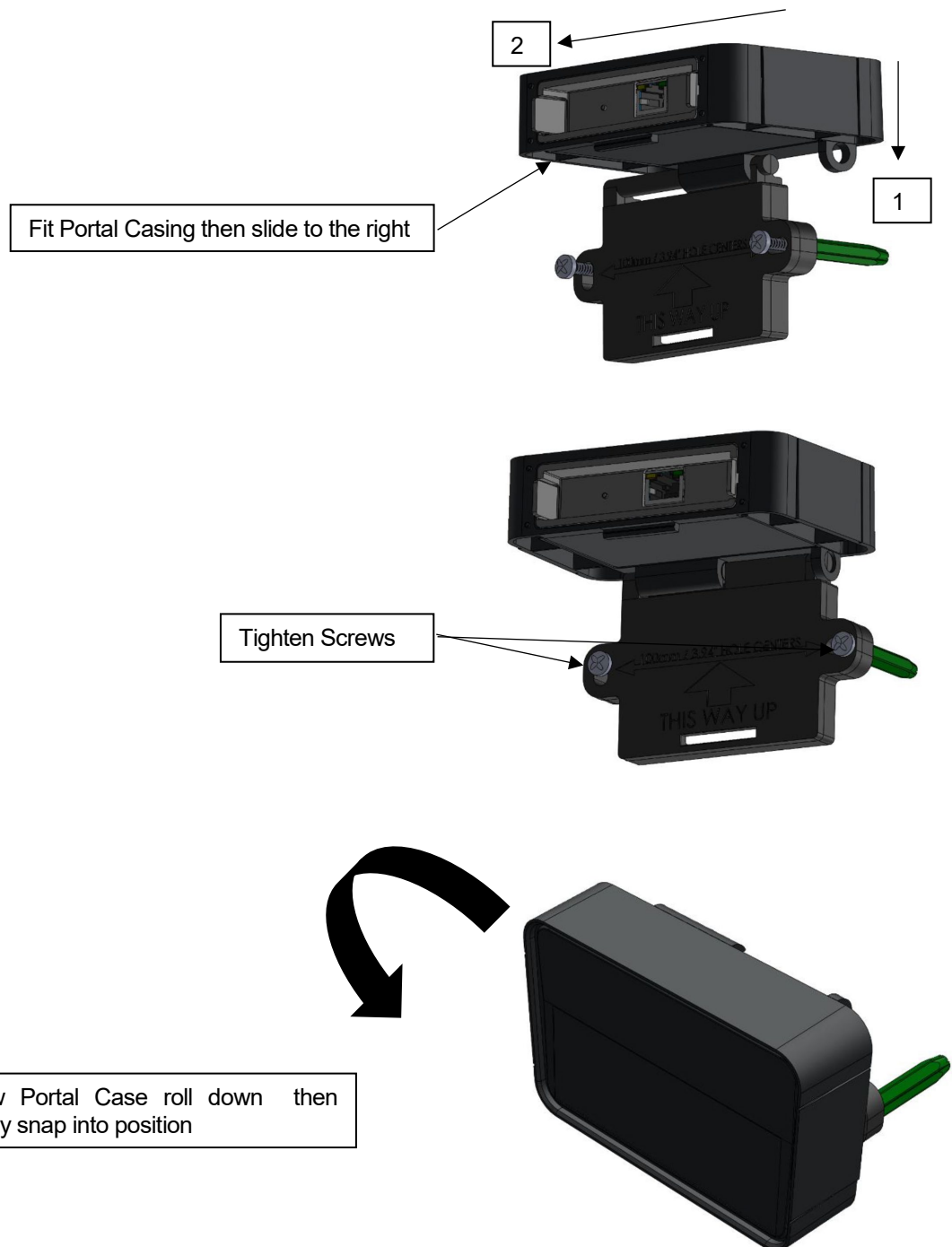
The InTouch Portal is supplied with:

- An integral mounting plate
- 2 x 10g x 1 ¼" philips head 316 SS screws
- 2 x plastic wall plugs
- 1 x 3m Cat 6 Comms Cable

Ensure the InTouch Portal is installed out of direct Sun and mounted so that water cannot ingress the underside (cable connection point).

The Portal will obtain its power from the Cat 5 or Cat 6 cable the connects it to the Insnrg equipment system.





## Check List

- ✓ Portal is securely mounted out of direct sun with connections facing down
- ✓ Cat 5 or Cat 6 cable plugged into port beneath
- ✓ Other end of Portal plugged into Insnrg Vi/Expansion relay system or Insnrg heater
- ✓ Both lights on bottom of Portal are now flashing rapidly (before connection to WiFi)
- ✓ Wifi is stable with at least 2 bars using Smart Phone to detect



## Thanks again for purchasing some of our high performance Pool Equipment



We know that you will get many years of enjoyment from this product.

Insnrg has been founded by persons with over 120 years experience in the Pool and Spa industry.

We pride ourselves on developing products that are specifically created for your backyard lifestyle. We are continuously developing new products and ideas to make pool ownership easier and fun.

Should you wish to keep updated with our progress and hear first hand our new products and developments, please feel free to stay in touch by using any or all of the below methods:

### SNAIL MAIL

64 Duerdin Street,  
Clayton, VIC, 3168

### LANDLINE

(03) 8578 5633

### WEBSITE

[www.insnrg.com](http://www.insnrg.com)